

PROJECT COMMUNITY CONNECT 2023



During the month of October, United Way NCA hosted three resource fairs as part of our larger annual Project Community Connect (PCC) signature event across Takoma Park, Maryland, Washington D.C. and Arlington, Virginia. Through this initiative, we provided access to essential services and much-needed resources to the ALICE (Asset Limited, Income Constrained, Employed) population. ALICE represents the nearly 1.3 million low to moderate income individuals in our region that are working hard but are struggling to afford basic necessities.



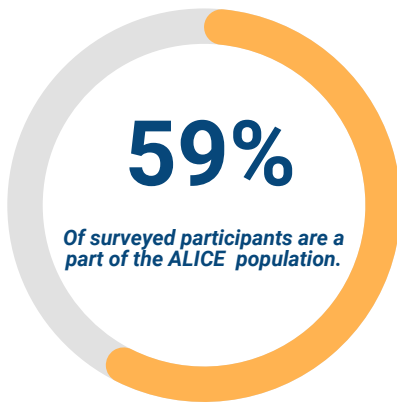
40

Partner organizations provided access to resources and information to PCC attendees.



331

People served over the course of three resource fairs across the region.



166 Participants Surveyed

67% Participants Are Female

53% Participants Who Are Unemployed

58% Participants Are Black

59% Participants have an annual income of less than \$50,000.

VOLUNTEER DATA



478

Total Volunteer Hours



186

Total Volunteers

ESSENTIAL NEEDS KITS



1,693

Total Kits Distributed

620 Cold Weather Kits

606 Hygiene Kits

467 Snack Kits



United Way of the National Capital Area