

# ALICE Lives Here

ALICE helps reshape how we understand financial hardship today, and the ongoing challenges that so many in our community face.

ALICE is not one person, it stands for Asset Limited, Income Constrained, Employed, and represents nearly 500,000 households (or 1.3M individuals) in the region who live above the Federal Poverty Level, but below the cost of living. **We all know ALICE.**

They may be a friend, a relative, or a coworker. It is up to us to help our ALICE neighbors achieve the quality of life that our community members need and deserve.



## HEALTH

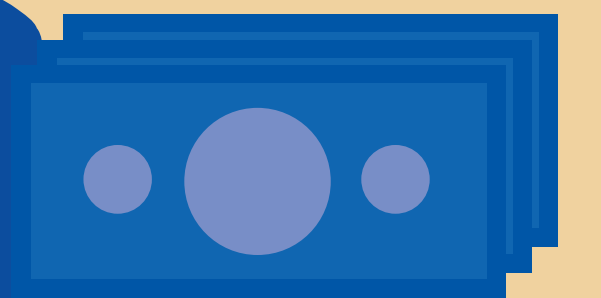
**4,500 kits containing food, clothing and hygiene supplies distributed through Project Community Connect.**

Over 2,000 people engaged to receive tests and education for chronic conditions.

719 people received COVID-19 test, vaccines, and education.

In 2023, the total savings from our SingleCare program is \$3,298,263, serving 33,786 individuals.

## ECONOMIC OPPORTUNITY



**12,559 clients received financial coaching, workforce development, entrepreneurial skills, and homeownership support across our 5 Financial Empowerment Centers**

Over 1,367 Veterans received services to develop capacity for financial literacy and planning, employment and entrepreneurial skills, and improve mental health and well-being.

900 clients received free tax preparation services.

Over \$1.4M, including \$389,241 from the Earned Income Tax Credit was refunded to clients.

**4,956 students served in attendance, course performance, social-emotional learning, and college/career readiness.**

11,000+ contact hours of Community School Coordinators engaging students and families in academic and wraparound services. That means an additional 1.5 hour of engagement per school day.

Social-emotional learning program Character Playbook served 185 schools:

- » 21,965 students learned about healthy relationships.
- » 2,910 students learned about mental wellness



## EDUCATION

VOLUNTEERS	Hours	Value of Volunteer Time	Value of Tangibles
750	1,656	\$64,400	\$83,400

PROGRAM PARTNERS	Resources to communities in crises		
	Invested in the Community	People served	Resources & funds delivered
20	\$5M	8,785	\$3.2M